

ISBER Endorsed PROFICIENCY TESTING 2013 PROGRAM

Proficiency Testing Provider:



IBBL (Integrated BioBank of Luxembourg)
6, rue Nicolas Ernest Barblé
L-1210 Luxembourg
Luxembourg

Contact us:

Tel: +352 274464-62 (Mon-Fri, 9 am - 5 pm CET)

Email: ISBERPT@ibbl.lu

Web: www.ibbl.lu

The ISBER endorsed PT Program includes five inter-laboratory testing Schemes:

- Cell Viability (CELL)
- DNA Quantification and Purity (DNA)
- RNA Integrity (RNA)
- Tissue Histology (THIST)

In each scheme, Test Items will be shipped to the biorepository facility, which will then use its routine testing methods to characterize the samples. Each Participant can assess the Test Items with one or more methods. Results can be submitted online on a dedicated website.

IBBL will evaluate and statistically analyze the test results. Each Participant will receive a personalized Report that will show how their biorepository's results compare to all Participants' results, including an overall summary of the statistical analysis.

The "Cell Viability" Scheme (CELL)

The cells used for this Scheme are a Jurkat cell line which is grown in culture in RPMI1640 10% FBS at a concentration of 0.1 to 1.5×10^6 /ml in T175 cm² in a humidified incubator at 37°C, 5% CO₂. Cells are then frozen in an animal protein-free, serum-free and defined cryopreservation medium containing 10% dimethyl sulfoxide (DMSO).

Two different Test Items containing cells at a different level of viability (i.e. Tube A and Tube B) are provided to each Participant.

For each Test Item (Tube A and Tube B) the percentage of viable cells is measured following the Participant's usual routine testing method(s). The results are collected under the following methods: Trypan Blue Staining or Flow Cytometry.

The "DNA Quantification and Purity" Scheme (DNA)

The DNA used for this Scheme is extracted from a cultured Jurkat cell line. Two different Test Items containing DNA at a different concentration and 260/280 ratio (i.e. Tube A and Tube B) are provided to each Participant. No processing is required at reception and the Test Items are stored and tested at room temperature.

For each Test Item (Tube A and Tube B), the Participant will need to measure the DNA concentration (ng/μl) and 260/280 ratio following his/her usual routine method. The results are collected under the following methods: Spectrophotometry, Spectrofluorometry, Microfluidic LabOnchip, Trinean Spectrophotometry (with cDROP Software) or Other.

The "RNA Integrity" Scheme (RNA)

The RNA used for this Scheme is extracted from a Jurkat cell line by a Qiagen RNeasy mini kit method, then dried in Biomatrix RNASTable tubes. Two different Test Items containing RNA at a different level of integrity (i.e. Tube A and Tube B) are provided to each Participant. Rehydration with RNAase free water is required before testing at room temperature.



For each Test Item (Tube A and Tube B) the RNA Integrity is measured following the Participant's usual routine testing method(s). The results are collected under the following methods: Agilent Bioanalyzer (RIN), Biorad Experion (RQI), ScreenTape R6K (SDV), QIAxcel System (28S/18S rRNA ratio and/or RIS) or Other (28S/18S rRNA ratio).

The "Tissue Histology" Scheme (THIST)

The tissues used for this Scheme are taken from hepato carcinoma samples. Web access to two different photos (Test Item A and Test Item B) is granted to each Participant.

The tissue characterization/mapping is done through the assessment of the percentage of viable neoplasm following the Participant's usual routine testing method(s).

The DNA extraction "bonus"

For Participants registering to more than 1 Scheme a "bonus" interlaboratory exercise will be offered free of charge. One tube of stabilized whole blood is shipped to the Participant. DNA is extracted according to the Participant's routine procedures and is sent back to the IBBL. Each Participant will receive a summary statistics highlighting his individual results, in terms of DNA yield per ml of whole blood (included in the performance report).

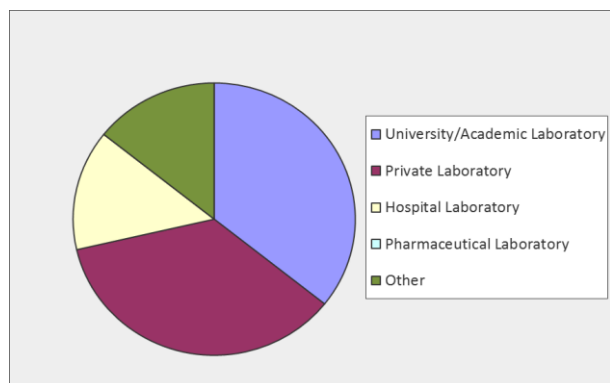
Timeline of the PT 2013 Program

Registration Open	September 2013
Registration Close	October 2013
Sample Shipment*	November 2013
Submission of Results	December 2013
Reporting	February 2014

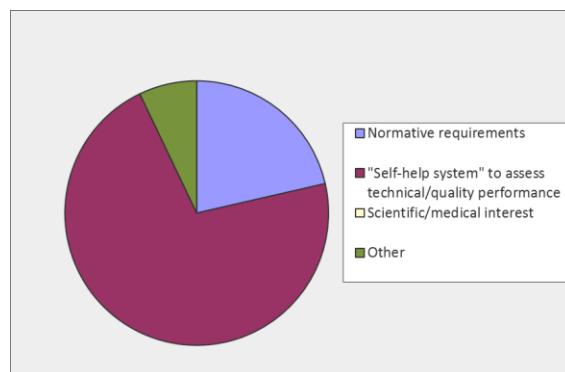
*Note: Test Items will be sent to all Participants at the same time.

Participation in 2012

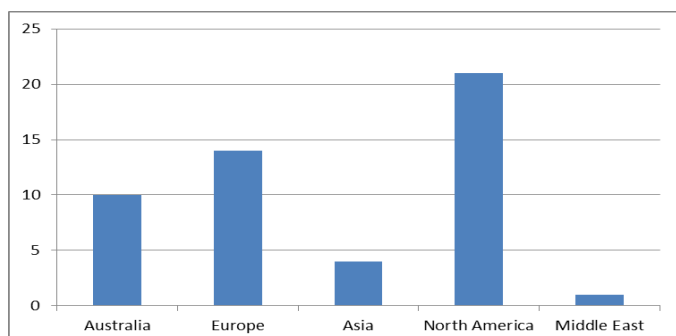
Type of facility:



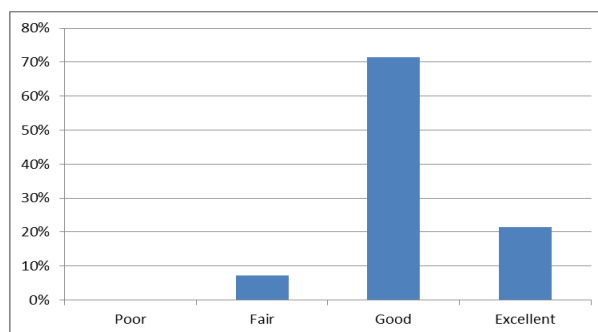
The reason for participating in the Proficiency Testing Program:



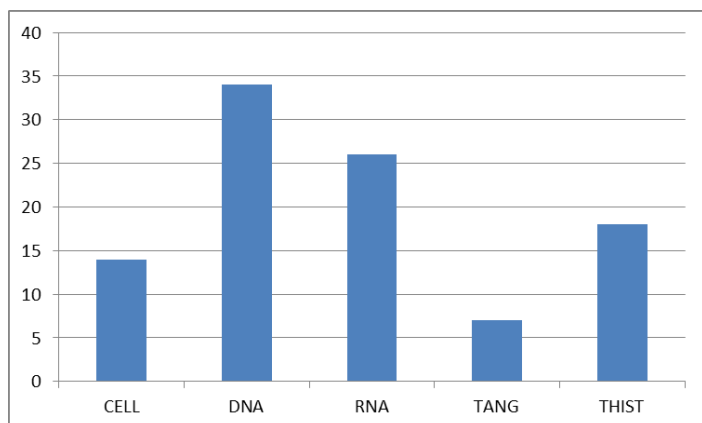
Geographical distribution of Participants :



The overall level of satisfaction of customers:



Participation distribution :



Successful results :

